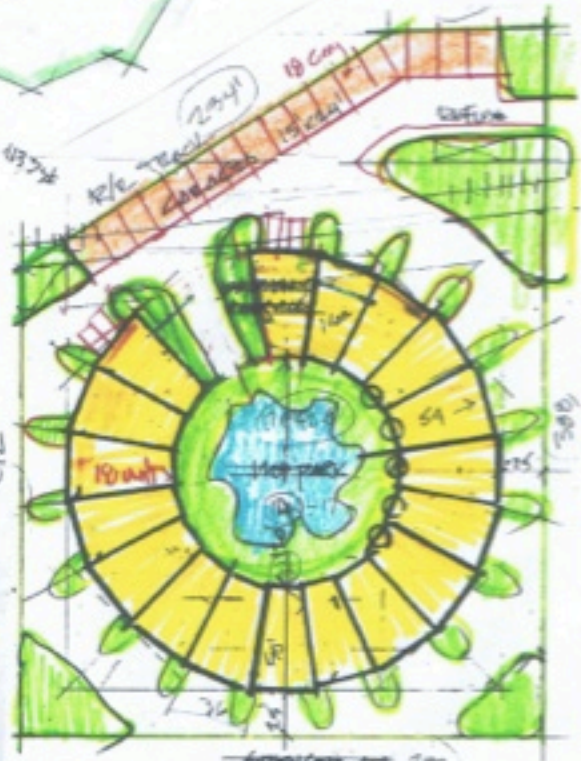




11x17 1/2 1'60' → 8.5

1st FLOOR 1028 SF

2nd FLOOR 1132 SF



SPENCER OORCLE
 11x17 1/2 1'60' 8.5(11) = 6.5(12)
 1st FLOOR 1028 SF + Living Terrace
 2nd FLOOR 1132 SF
 ATTIC 220 SF
 2230 + 600 = 2830 TOTAL